



Endolaser 422

Partner for Life



Technical specifications

Mains voltage	230 Vac 50-60Hz ±15% 115 Vac 50-60Hz ±15%
Max. Power consumption	15 VA
Double fuse protection:	250 mA Rit 5 x 20 mm
Plug for Interlock/safety key (contacts normally closed)	With DIN plug
Backlit LCD Display, to visualize and control operating parameters	graphic 240 x 128 pixel
Programmable treatment time	up to 60 minutes
Diode Laser wave length emission	905 nm + 808 nm
Laser classification according to EN-60825-1	3B
MPE (Maximum permissible exposure)	5032.06 J . m ⁻²
AEL (Accessible emission limit)	77.1 mW (class 3B limit)
Divergence	107 mrad
NOHD (Nominal ocular hazard area) direct light	2.89 metres
NOHD diffused light	0.00 metre
IR radiation sensor for external laserprobe	On front panel
Programmable impulse frequency	10 - 10.000 Hz
Duty Cycle (only with continuous lase diodes)	10 - 9.900 Hz
Power peak depending on Laserprobe	Up to 500 W
Independent output channels	2
Pre-programmed protocols	82
Free programmable positions	50
Plastic desktop container – external dimensions (L x H x D)	29x28x11, 5 cm
Weight of machine body:	3,2 kg



Ordering data:

1422911	Endolaser 422 (230 Vac), probes not included
1422912	Endolaser 422 (115 Vac), probes not included
Standard accessories	
1422750	User Manual Endolaser 422
1422815	Protective goggles Endolaser 422 - 2 pairs
3444290	Power cord 250V/10A Europe
Optional accessories	
1422816	Laserprobe LP025, pulsed laser diode, peak 25 W, 905 nm
1422817	Laserprobe LP100, pulsed laser diode, peak 100 W, 905 nm
1422818	Laserprobe LP500, continuous laser diode, peak 500 mW, 808 nm
1422819	Laser clusterprobe LP400, pulsed laser diode, peak 4 x 100 W, 905 nm



Partner for Life

Enraf-Nonius B.V.

Vareseweg 127
3047 AT Rotterdam
P.O. Box 12080
3004 GB Rotterdam
The Netherlands

Tel : +31-(0)10 – 203 06 00
Fax : +31-(0)10 – 203 06 99
E-mail : info@enraf-nonius.nl
Website : www.enraf-nonius.com

your distributor:

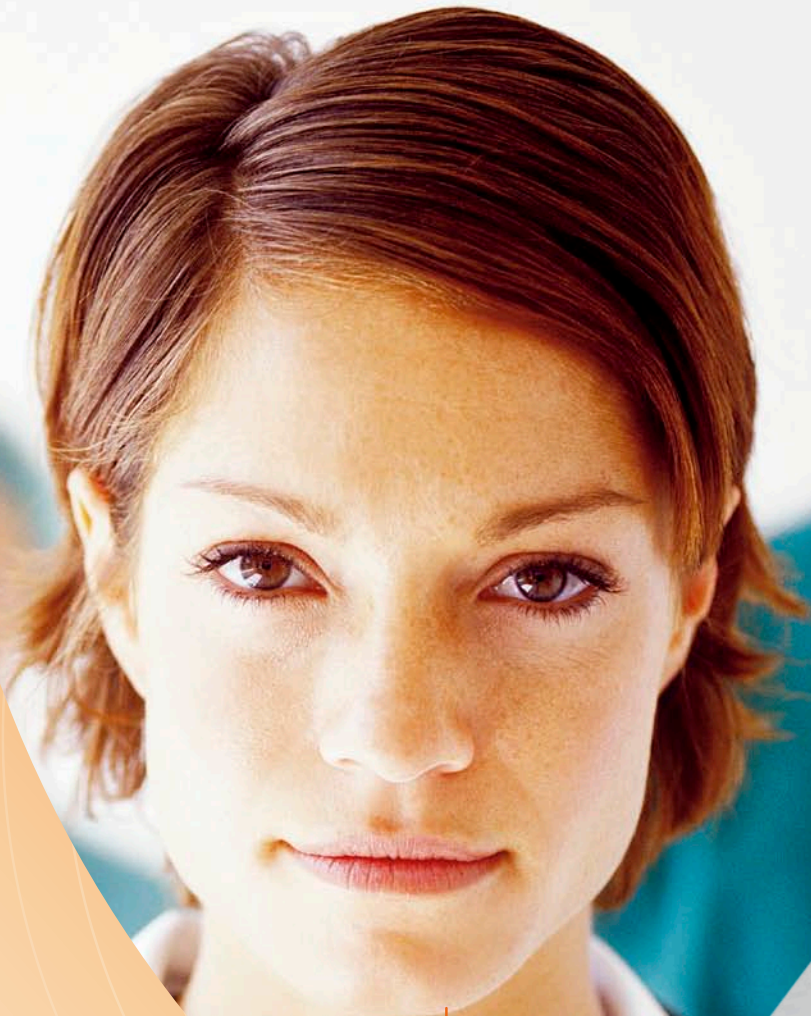
Visit us at: www.enraf-nonius.com

Endolaser 422



Partner for Life

Effective treatment



At the speed of light

The Endolaser 422 - dual probe laser therapy for effective treatment of pain and injury and for fast tissue regeneration

Passion for motion

Endolaser 422

Effective treatment at the speed of light

The Endolaser 422 is an advanced and modern designed unit for laser therapy with interchangeable laser probes.

Laser therapy, also known as photobiomodulation, low level laser therapy (LLLT), cold laser therapy, and as laser biostimulation is an effective method for:

- Pain management
- Wound healing
- Soft tissue injury treatment
- Nerve regeneration
- Skin treatment (esp. for Acne)
- Cosmetic regeneration
- Resolving viral and bacterial infections

Laser is applied to the anatomical region of interest by means of a diode probe. This application can be static and very localized or dynamic for larger regions. In general a treatment only takes a few minutes. This effectiveness and the short application time make laser therapy with the Endolaser 422 a valuable part of a complete treatment session.

Standard with 2 channels

The Endolaser 422 is a 2-channel unit. This allows for simultaneous treatment of two segments within a patient or even simultaneous treatment of two patients.

Dual probe laser therapy

Another method that rapidly gains popularity is the simultaneous treatment of one lesion with both a diffuse application in the peripheral area and a very localized, intense application at the epicentre of the lesion. This central-peripheral dual probe laser therapy approach is extremely promising in several application areas.

Several Diodes available

For treatment of small surfaces with monolaser there are diodes of 25, 100 and 500 mW. For a larger area it is possible to use a cluster of 4 diodes of 100 mW each – making it a 400 mW diode in total. The probes are interchangeable which has a positive influence on the total treatment time.

Simple user interface

The unit is software operated. A treatment program can be created or adjusted in a few single steps. By means of buttons and knobs the level of energy can be adjusted simply and accurately during treatment. After any adjustment of the protocol the dose is calculated instantly.

The Endolaser 422 is also provided with an extensive number of treatment protocols for the most common treatment modalities of laser therapy (over 80 protocols at the time of publication). Besides these protocols you can also create your own programs which makes the Endolaser 422 a very effective tool in your practice.

Safe

The Endolaser 422 is provided with a laser-test that allows for easy verification of the laser probe. This assures proper functioning of the machine and guar-





Partner for Life

ensures safe and accurate application of the laser energy to your patients.

Of course the Endolaser 422 is standard equipped with two pairs of eye goggles, both for the therapist and for the patient, to protect the retina from the intense energy of the laser.

Treatment at the speed of light

The Endolaser 422 is a valuable addition to your practice allowing for effective results in short treatment times.

Being an Enraf-Nonius product, the high quality of the Endolaser 422 assures for years of proper functioning and good design.

With the Endolaser 422 you can treat your patients and clients at the speed of light!



Endolaser 422

Safe and fast laser therapy

